



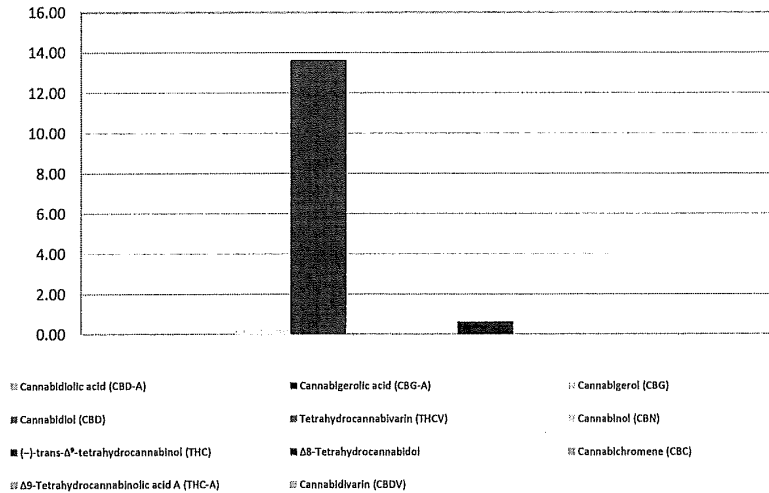
Cannabinoid Profile

Customer: CBD Luxe
Customer Sample ID: CBDLux-500-30 Mini-032019-2
Laboratory Number: 201903-1130
Extraction Technician: MTO
Analytical Chemist: GB
Density (g/mL): 0.945

Extraction Date(s): 3/20/2019
Analysis Date(s): 3/20/2019

Cannabinoid (HPLC)	Results		
	LOD (mg/mL)	Percent	mg/mL
Cannabidiol (CBD)	<0.2	1.362%	13.62
Tetrahydrocannabinol (THC)	<0.2	0.061%	0.61
Cannabidiol (CBD)	<0.2		
Cannabigerol (CBG)		0.023%	0.23
Cannabigerol (CBG)			
Cannabidiol (CBD)			
Tetrahydrocannabinol (THC)	<0.2		
Cannabidiol (CBD)	<0.2		
(-)-trans- Δ^9 -tetrahydrocannabinol (THC)		0.061%	0.61
Δ^8 -Tetrahydrocannabinol	<0.2		
Cannabichromene (CBC)	<0.2		
Δ^9 -Tetrahydrocannabinolic acid A (THC-A)	<0.2		
Cannabinoids Total		Percent	mg/mL
Max Active THC		0.06%	0.61
Max Active CBD		1.36%	13.62
T. Active Cannabinoids		1.45%	14.46
Total Cannabinoids		1.45%	14.46
Ratios			
22.23 CBD to THC		0.04 :1 THC to CBD	

Cannabinoid (mg/mL)



Altitude Consulting, LLC utilizes NIST traceable Reference Standards and Certified Reference Material to calibrate analytical instruments along with proven analytical methods. The methods are applied in the most ethical manner following good laboratory practice guidelines. The results of this report are based solely on the sample submitted and cannot be reproduced.

This report expires 30 days after analysis date.